



StorTrends® 3500 Software Re-Installation Procedure for StorTrends iTX (version 2.8)

MAN-3500-ITX28-INST
12/09/2013

© Copyright 1985-2013 American Megatrends, Inc.
All rights reserved.
American Megatrends, Inc.
5555 Oakbrook Parkway,
Building 200
Norcross, GA 30093

This publication contains proprietary information that is protected by copyright. No part of this publication can be reproduced, transcribed, stored in a retrieval system, translated into any language or computer language, or transmitted in any form whatsoever without the prior written consent of the publisher, American Megatrends, Inc.

All trademarks and trade names used in this document refer to either the entities claiming the marks and names or their products. American Megatrends, Inc. disclaims any proprietary interest in trademarks and trade names other than its own.

Revision History

12/09/2013 Initial release

Disclaimer

Although efforts have been made to assure the accuracy of the information contained here, American Megatrends expressly disclaims liability for any error in this information, and for damages, whether direct, indirect, special, exemplary, consequential or otherwise, that may result from such error, including but not limited to the loss of profits resulting from the use or misuse of the manual or information contained therein (even if American Megatrends has been advised of the possibility of such damages). Any questions or comments regarding this document or its contents should be addressed to American Megatrends at the address shown on the inside of the front cover.

American Megatrends provides this publication “as is” without warranty of any kind, either expressed or implied, including, but not limited to, the implied warranties of merchantability or fitness for a specific purpose.

Some states do not allow disclaimer of express or implied warranties or the limitation or exclusion of liability for indirect, special, exemplary, incidental or consequential damages in certain transactions; therefore, this statement may not apply to you. Also, you may have other rights that vary from jurisdiction to jurisdiction.

This publication could include technical inaccuracies or typographical errors. Changes are periodically made to the information herein; these changes will be incorporated in new editions of the publication. American Megatrends may make improvements and/or revisions in the product(s) and/or the program(s) described in this publication at any time.

Requests for technical information about American Megatrends products should be made to your American Megatrends authorized reseller or marketing representative.

STOP!

**THIS DOCUMENT DESCRIBES HOW TO RE-INSTALL THE SOFTWARE ON THE
STORTRENDS 3500 DUAL CONTROLLER SAN STORAGE APPLIANCE ONLY.**

Installation Procedure

STOP!

YOUR STORTRENDS 3500 DUAL CONTROLLER SAN STORAGE APPLIANCE IS SHIPPED WITH THE STORTRENDS ITX 2.8 SOFTWARE ALREADY INSTALLED. FOLLOW THE INSTRUCTIONS IN THIS DOCUMENT ONLY IF YOU NEED TO RE-INSTALL THE STORTRENDS ITX 2.8 DUAL CONTROLLER SAN SOFTWARE.

WARNING!

ALL INFORMATION STORED ON THE STORTRENDS STORAGE APPLIANCE WILL BE ERASED. THIS INCLUDES ALL USER RIGHTS, TARGET INFORMATION AND SO ON.

STOP!

BACKUP ALL DATA STORED ON YOUR STORAGE APPLIANCE BEFORE PROCEEDING!

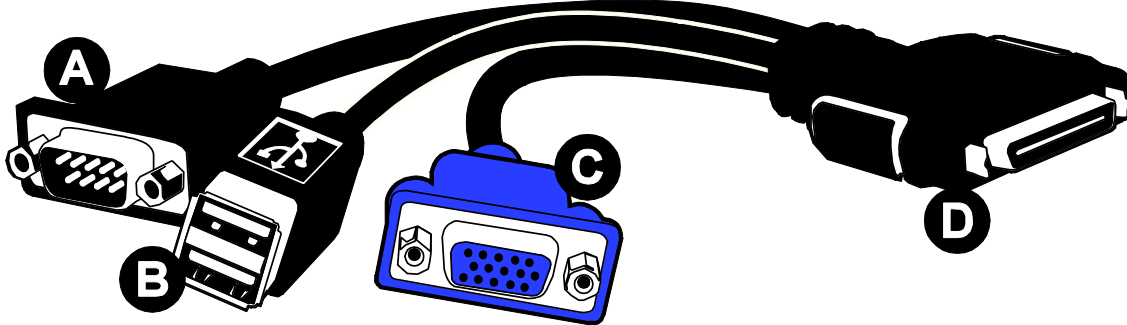
Overview

Use the steps outlined in this document to re-install the StorTrends Dual Controller SAN software onto your storage appliance.

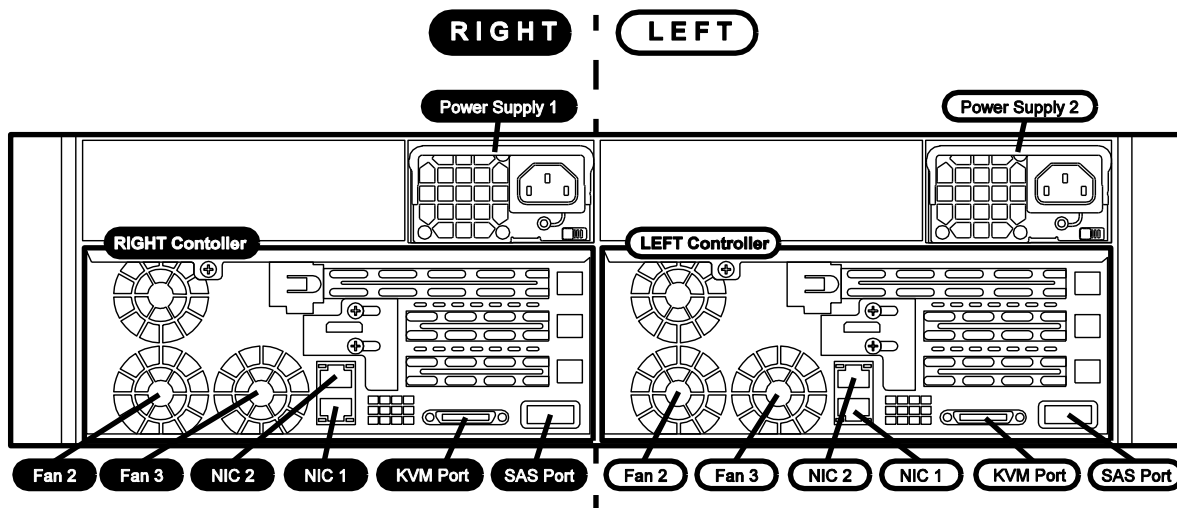
Note:

This document assumes that your StorTrends Dual Controller SAN storage appliance has already been deployed. Meaning that your StorTrends Dual Controller SAN storage appliance has been installed into a rack and connected to power and local network. If not, see the *StorTrends 3500 Dual Controller SAN Storage Appliance Setup Guide* first.

Attach a separate KVM Dongle to both the Left Controller and Right Controller



Attach a KVM Dongle to both the **Left Controller** and **Right Controller**'s KVM Port connector.



Attach a *Keyboard* and *Monitor* into the KVM Dongle on both the **Left Controller** and **Right Controller**. Plug a USB CD-ROM drive just into the KVM Dongle on the **Left Controller**. Put the *StorTrends Storage Appliance CD* into the CD-ROM drive before proceeding.

STOP!

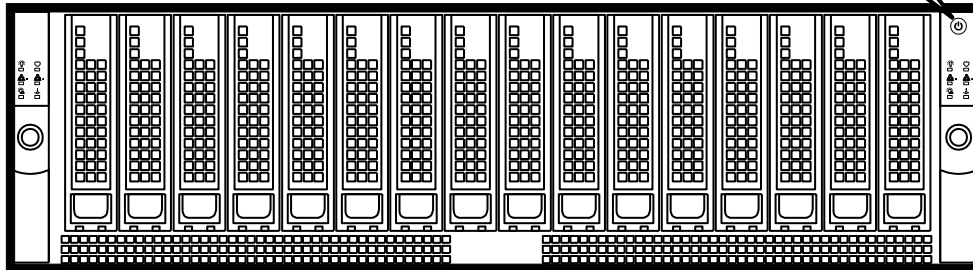
MAKE SURE THAT THE STORTRENDS STORAGE APPLIANCE CD IS IN THE CD-ROM DRIVE AND THAT THE CD-ROM DRIVE IS PLUGGED INTO THE LEFT CONTROLLER BEFORE PROCEEDING!

Note:

You will need to put the *Right Controller* into *BIOS* mode at the same time the *Left Controller* boots up off the *StorTrends Storage Appliance CD*. If you don't, you will need to perform the next few steps over again.

Power On

Power on by pressing this button.



IMPORTANT!

The Power button acts more like a toggle switch than a traditional OFF/ON button.

For example:

The Power button will power on both controllers if they are both powered off. However, if the left controller is powered on and the right controller is powered off, the Power button will turn off the left controller, but will also turn on the right controller.

Put the Right Controller into BIOS mode

View the monitor connected to the *Right Controller*. You will see the initial splash screen with text at the bottom stating to *Press to enter BIOS setup*. When you see this screen, immediately press the <DELETE> key on the keyboard attached to the *Right Controller*.



When you see the *BIOS Setup Utility* screen, you have successfully entered the *BIOS* mode on the *Right Controller*.

BIOS SETUP UTILITY				
Main	Advanced	Security	Boot	Exit
System Overview		Use [ENTER], [TAB] or [SHIFT-TAB] to select a field.		
System Time	[12:20:58]	Use [+] or [-] to configure system Time.		
System Date	[Tue 02/07/2012]			
Supernico X8DTS				
BIOS Build Ver	:2.0c			
BIOS Build Date	:12/02/11			
Processor				
Intel(R) Xeon(R) CPU	E5504 @ 2.00GHz			
Speed	:2000MHz			
Physical Count	:1	↔ Select Screen		
Logical Count	:4	↑↓ Select Item		
System Memory		+- Change Field		
Size	:4088MB	Tab Select Field		
		F1 General Help		
		F10 Save and Exit		
		ESC Exit		
v02.68 (C) Copyright 1985-2009, American Megatrends, Inc.				

Begin the Installation

You should see the *Welcome to AMI StorTrends ITX* screen on the monitor attached to the *Left Controller*.

Press the <ENTER> to continue.

```
American Megatrends Inc
-----
Welcome to AMI StorTrends ITX.
To install on 3400i, press the <ENTER> key.

boot: _
```

Note:

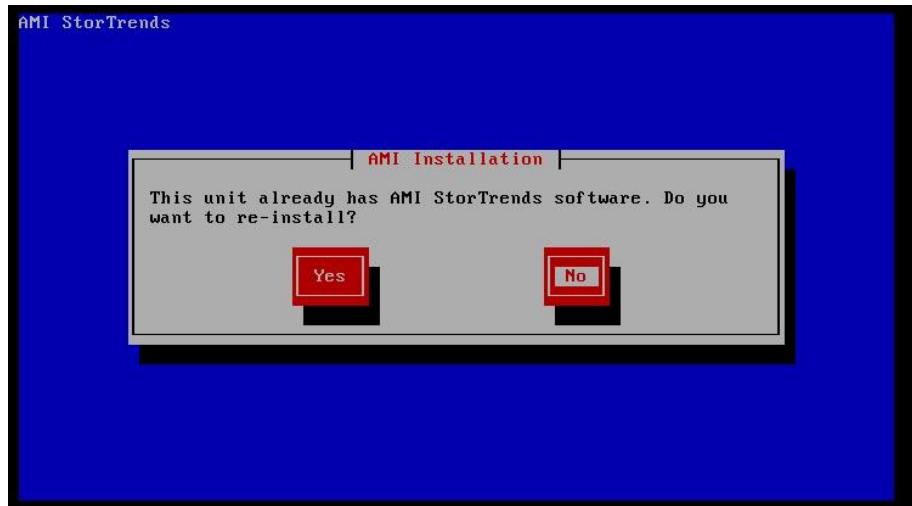
If you do not see the *Welcome to AMI StorTrends ITX* screen on the monitor attached to the *Left Controller*, you have to reset the power on your StorTrends 3500 storage appliance and start over (from the *Power On* section).

Warning and Prompts

Before the StorTrends iTX installation begins, you may be prompted with various messages. See the following sections for more information.

AMI Installation Warning

If there is already an existing installation you will be prompted to confirm that you wish to perform a re-installation. A reinstallation will erase all existing data.

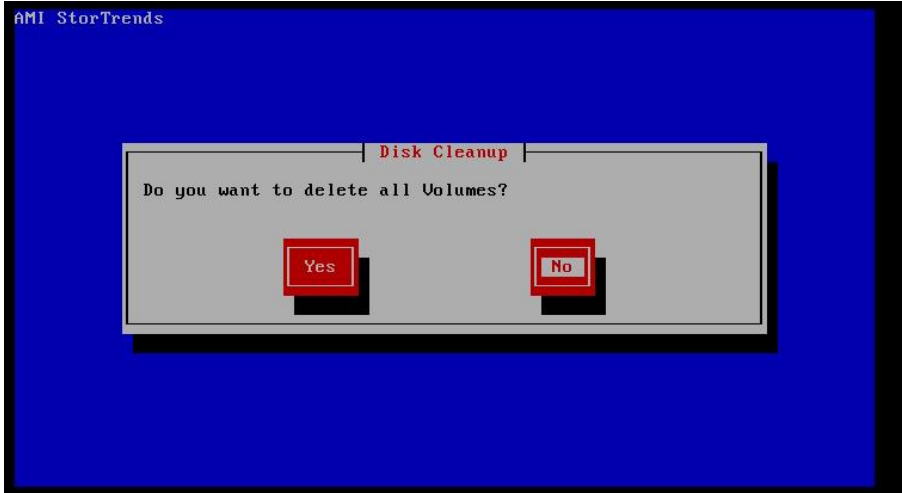


You are prompted to confirm that you want to install StorTrends iTX.



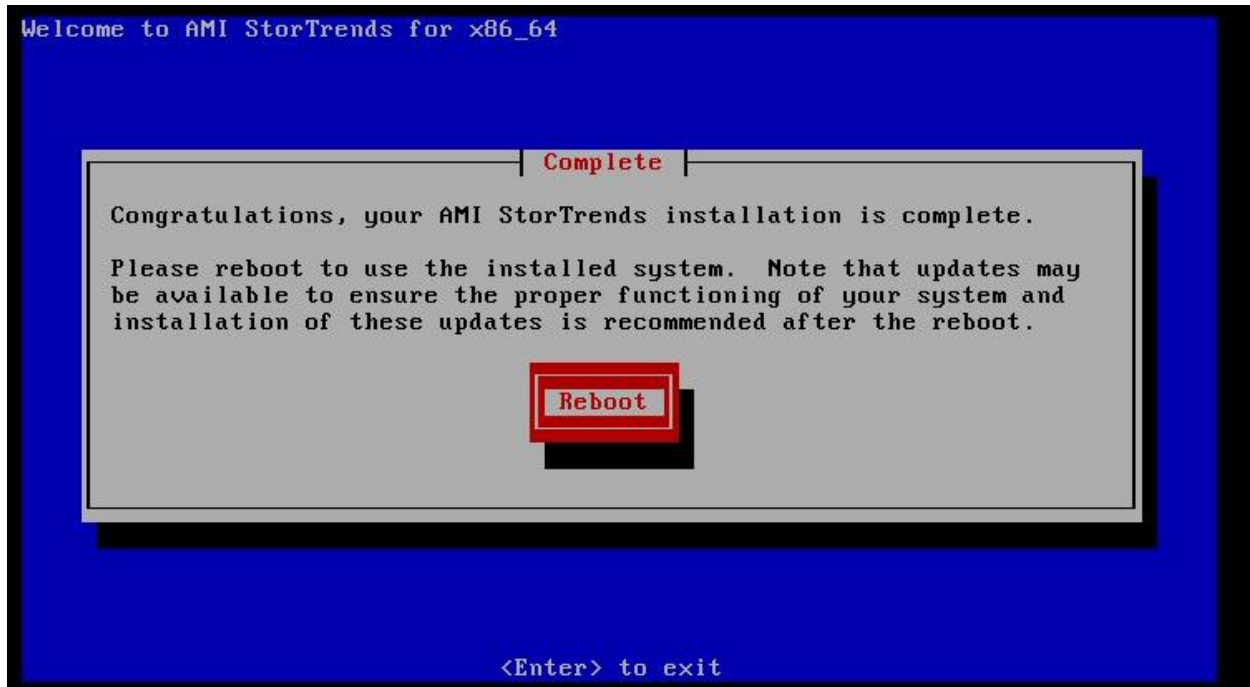
Note:

During the reinstallation, you will have the option to retain all Volume data. By default, **NO** is selected. You may be prompted with this message twice.



Installation Duration and Completion

The StorTrends iTX installation takes approximately 20 minutes. You will see various screens throughout the installation. Do not interrupt the system until the *StorTrends iTX Installation* is complete. Once the installation is complete, you will be prompted to *Reboot*.



Press the <ENTER> key to reboot.

Congratulations!

You have successfully re-installed StorTrends iTX on your StorTrends storage appliance.

Take your *Right Controller* out of *BIOS* mode by SAVING AND EXITING (<F10> followed by the <S> key) or by selecting EXIT (<ESC> key). You should be good to go!